

PANDY BANK WITH KITTY COINS

SHAPES

Cut out the Pandy Bank shapes below!



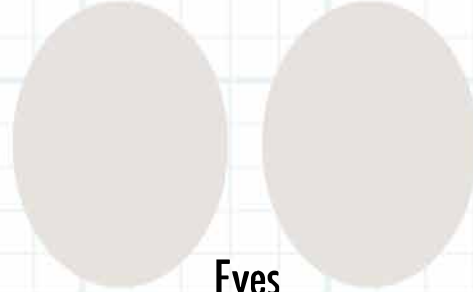
Ears



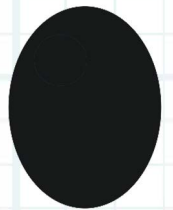
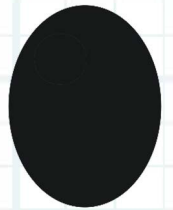
Inner Ears



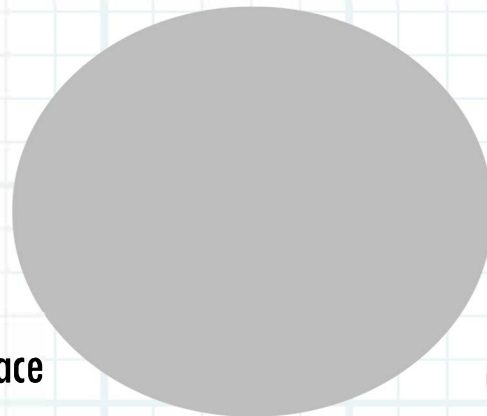
Ear tip



Eyes



Irises



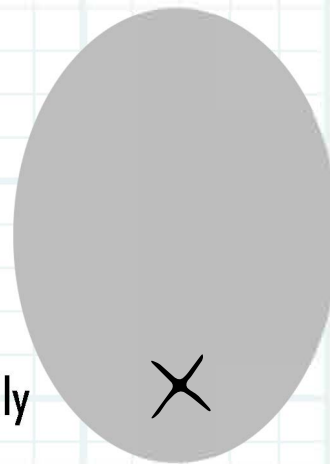
Face



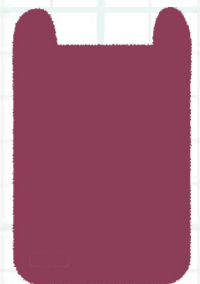
Pupils



Nose



Belly



Bag

Feet



Bag strap



PANDY BANK WITH KITTY COINS



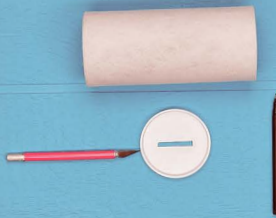
MATERIALS NEEDED: MAILING TUBE, EXACTO, MARKERS, BLACK CORD, FELT SHEETS, SHAPES SHEET, GLUE GUN, SCISSORS, TRIM



1. Cut out the Pandy Shapes from the sheet.



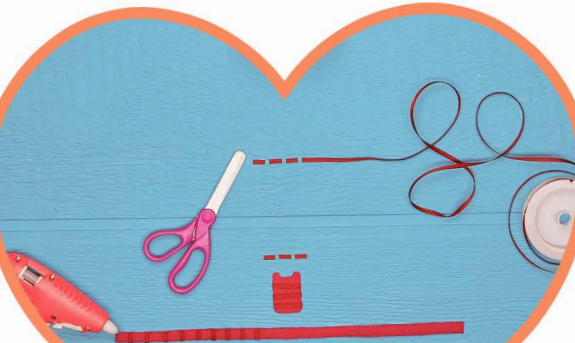
2. Glue white felt to cover the mailing tube.



3. Mark & cut out a coin slot on the tube lid.



4. Trace, cut out, & glue on felt Pandy Shapes.



5. Create stripes for the bag with the trim.



6. Cut cord for whiskers, & draw a Pandy face.